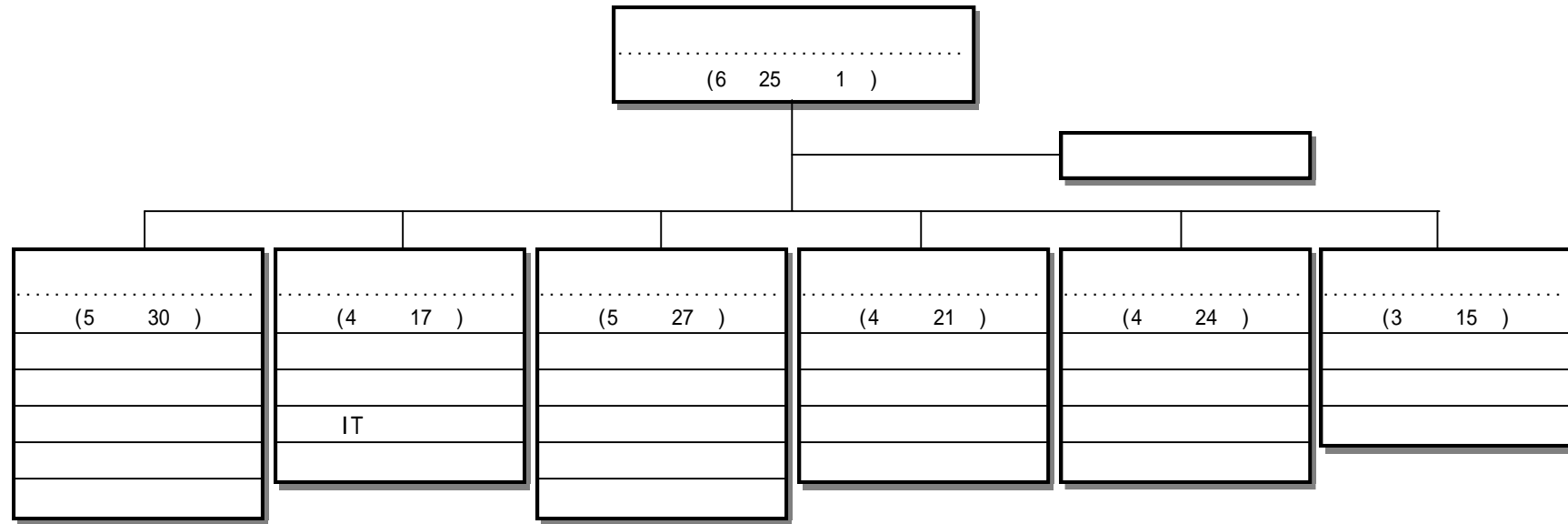


# 2005 2 가

1



2

		( : )												
		3	4	5	6	7								
	137	1	6	26	37	53	0	0	0	0	0	0	10	4
	134	1	5	25	35	55	0	0	0	0	0	0	10	3
	3	0	1	1	2	2	0	0	0	0	0	0	0	1

: 2005.10.18

3

( : )

		(%)		(%)		(%)
	<b>188,951,569</b>	<b>100.0 %</b>	<b>159,876,022</b>	<b>100.0 %</b>	<b>29,075,547</b>	<b>18.2 %</b>
	182,706,341	96.8 %	154,808,879	96.9 %	27,897,462	18.0 %
	1,273,895	0.6 %	1,460,495	0.9 %	186,600	12.8 %
	4,971,333	2.6 %	3,606,648	2.2 %	1,364,685	37.8 %
	<b>166,984,391</b>	<b>100.0 %</b>	<b>139,426,528</b>	<b>100.0 %</b>	<b>27,557,863</b>	<b>19.8 %</b>
	162,956,050	97.7 %	135,058,588	97.0 %	27,897,462	20.7 %
	1,273,895	0.7 %	1,460,495	1.0 %	186,600	12.8 %
	2,754,446	1.6 %	2,907,445	2.0 %	152,999	5.3 %
	<b>54,826,689</b>	<b>100.0 %</b>	<b>53,210,959</b>	<b>100.0 %</b>	<b>1,615,730</b>	<b>3.0 %</b>
	53,965,664	98.6 %	52,196,934	98.1 %	1,768,730	3.4 %
	109,025	0.1 %	109,025	0.2 %	0	0.0 %
	752,000	1.3 %	905,000	1.7 %	153,000	16.9 %
	<b>21,678,195</b>	<b>100.0 %</b>	<b>22,450,542</b>	<b>100.0 %</b>	<b>772,347</b>	<b>3.4 %</b>
	21,568,515	99.5 %	22,340,862	99.6 %	772,347	3.5 %
	109,680	0.5 %	109,680	0.4 %	0	0.0 %
	0	0.0 %	0	0.0 %	0	0.0 %
	<b>21,941,404</b>	<b>100.0 %</b>	<b>21,035,322</b>	<b>100.0 %</b>	<b>906,082</b>	<b>4.3 %</b>
	19,717,315	89.9 %	18,811,233	89.5 %	906,082	4.8 %

		(%)		(%)		(%)
	224,089	1.0 %	224,089	1.0 %	0	0.0 %
	2,000,000	9.1 %	2,000,000	9.5 %	0	0.0 %
	<b>36,284,706</b>	<b>100.0 %</b>	<b>10,361,398</b>	<b>100.0 %</b>	<b>25,923,308</b>	<b>250.2 %</b>
	35,633,814	98.3 %	9,521,817	91.9 %	26,111,997	274.2 %
	650,891	1.7 %	839,581	8.1 %	188,690	22.5 %
	1	0.0 %	0	0.0 %	1	100 %
	<b>18,224,717</b>	<b>100.0 %</b>	<b>18,224,717</b>	<b>100.0 %</b>	<b>0</b>	<b>0.0 %</b>
	18,154,040	99.7 %	18,154,040	99.7 %	0	0.0 %
	68,232	0.3 %	68,232	0.3 %	0	0.0 %
	2,445	0.0 %	2,445	0.0 %	0	0.0 %
	<b>14,028,680</b>	<b>100.0 %</b>	<b>14,143,590</b>	<b>100.0 %</b>	<b>114,910</b>	<b>0.8 %</b>
	13,916,702	99.3 %	14,033,702	99.3 %	117,000	0.8 %
	111,978	0.7 %	109,888	0.7 %	2,090	1.9 %
	0	0.0 %	0	0.0 %	0	0.0 %
	<b>21,967,178</b>	<b>100.0 %</b>	<b>20,449,494</b>	<b>100.0 %</b>	<b>1,517,684</b>	<b>7.4 %</b>
	19,750,291	90.0 %	19,750,291	96.6 %	0	0.0 %
	0	0.0 %	0	0.0 %	0	0.0 %
	2,216,887	10.0 %	699,203	3.4 %	1,517,684	217.1 %

		(%)		(%)		(%)
	<b>21,967,178</b>	<b>100.0 %</b>	<b>20,449,494</b>	<b>100.0 %</b>	<b>1,517,684</b>	<b>7.4 %</b>
	19,750,291	90.0 %	19,750,291	96.6 %	0	0.0 %
	0	0.0 %	0	0.0 %	0	0.0 %
	2,216,887	10.0 %	699,203	3.4 %	1,517,684	217.1 %

1

--

2

( : )

			182,706,341	100.0%	154,808,879	27,897,462
			162,956,050		135,058,588	27,897,462
1			53,965,664	24.0%	52,196,934	1,768,730
1-			2,212,813		2,337,813	125,000
1-			10,703,016		10,213,016	490,000
1-			29,638,426		28,234,696	1,403,730
1-			11,092,194		11,092,194	0
1-			248,567		248,567	0
1-			70,648		70,648	0
2			14,159,445	9.5%	14,931,792	772,347
2-			51,697		51,697	0

( : )

2-			625,000		625,000	0
2-			1,510,000		1,510,000	0
2-			5,806,187		5,806,187	0
2-	. IT		6,166,561		6,938,908	772,347
<b>3</b>			<b>7,409,070</b>	<b>3.7%</b>	<b>7,409,070</b>	<b>0</b>
3-			5,345,080		5,345,080	0
3-			2,063,990		2,063,990	0
<b>4</b>			<b>19,717,315</b>	<b>11.2%</b>	<b>18,811,233</b>	<b>906,082</b>
4-			16,604,082		17,298,000	693,918
4-			50,000		50,000	0
4-			540,000		540,000	0
4-			1,797,000		197,000	1,600,000
4-			726,233		726,233	0
<b>5</b>			<b>35,633,814</b>	<b>19.3%</b>	<b>9,521,817</b>	<b>26,111,997</b>
5-	.		34,605,217		8,471,620	26,133,597
5-			58,601		80,201	21,600
5-			969,996		969,996	0
<b>6</b>			<b>17,640,549</b>	<b>11.8%</b>	<b>17,640,549</b>	<b>0</b>
6-	.		2,533,701		2,533,701	0

( : )

6-	.		8,038,097		8,038,097	0
6-	.		6,634,994		6,634,994	0
6-			433,757		433,757	0
<b>7</b>			<b>513,491</b>	<b>0.3%</b>	<b>513,491</b>	<b>0</b>
7-			475,397		475,397	0
7-			38,094		38,094	0
<b>8</b>			<b>13,916,702</b>	<b>8.0%</b>	<b>14,033,702</b>	<b>117,000</b>
8-			12,979,018		13,029,018	50,000
8-			937,684		1,004,684	67,000
			<b>19,750,291</b>		<b>19,750,291</b>	<b>0</b>
			<b>19,750,291</b>		<b>19,750,291</b>	<b>0</b>
<b>1</b>			<b>19,750,291</b>	<b>12.2%</b>	<b>19,750,291</b>	<b>0</b>
1-			19,750,291		19,750,291	0

3

【           】

		2004	2005	2006	
1 :					
1- :					
	5	5	( 1 )	( 1 )	
	/	3 9	6 20	6 20	/
	Working Group		( 6 60 )	( 6 60 )	WG
		,	- 3 - 4 - 4	- 4 - 4 - 4	
	R&D		4	R&D	
1- :					
		3 ( 50 )	5 ( 102 )	5 ( 200 )	, ,



		2004	2005	2006	
1- :					
		26	30	30	( )
	( )	(15%)	(80%)	(100%)	
		( <sup>2</sup> : 200 )	( <sup>2</sup> : 500 )	-	( )
		130	140	150	
	LME Distripark	20,029	6,961 <sup>2</sup> 61	245	
1- :					
		4	5	6	
		3	4	5	

	2004	2005	2006	
1- :				
(66 )	3.5%	3.5%	3.5%	가
	100 * 4	100 * 5	100 * 5	( * )
	2	2	2	
	6	6	6	( , )



					( 927,730) = 1,350,730
LME Distripark	12,053,000	12,000,000	53,000		
				(3210-3211-220-401-01)	
				LME Distripark ( )	= 53,000
	752,000	905,000	153,000		
				(5110-5111-310-311-04)	
				'05 LME Distripark ( )	= 0
				0 - 153,000,000	= 153,000